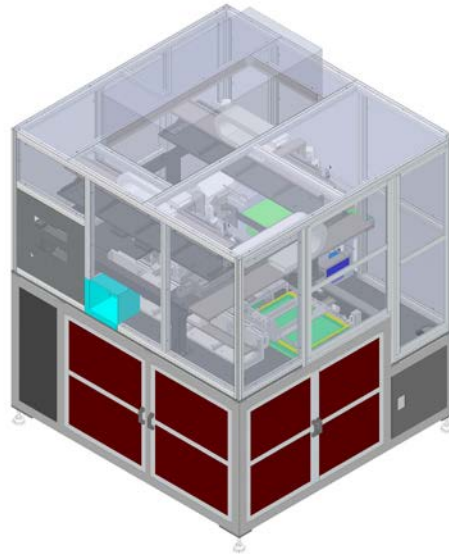


PROJECT REFERENCE AUTOMOTIVE

PROJECT

TRAY STACKER P&P



PROJECT COMPLETION 6 MONTHS



3 SUBCONTRACTORS



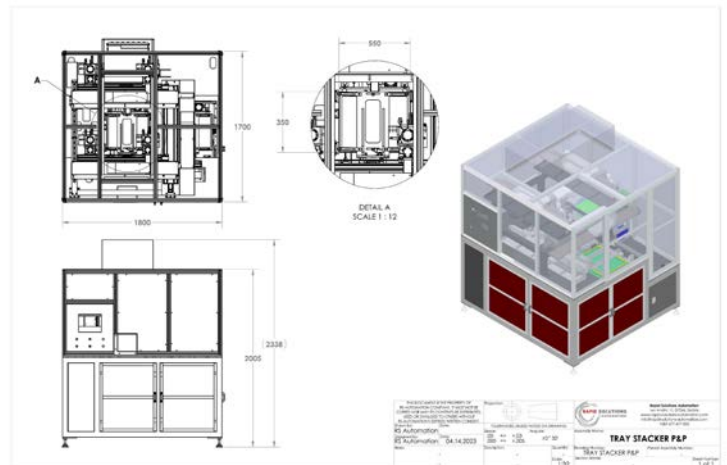
STACKER CAPACITY OF 30+ TRAYS
WITH 15mm STACK HEIGHT
PRODUCTION FLOOR COMPACT
CLEAN ROOM READY / ESD READY



AXIS PICKING SPEED OF MAX 5m/s
AVERAGE STACKING SPEED OF 50
TRAYS/MIN – DEPENDING ON
PRODUCT COUNT



COMPLETE AUTOMATION, MAIN
ELECTRICAL ENCLOSURES AND
UNIT DESIGN DONE BY
RAPID SOLUTIONS AUTOMATION



INSTALLATION
LOCATION: GERMANY



expanding automation possibility



PUBLIC