



RAPID SOLUTIONS
AUTOMATION

expanding automation possibility

COMPANY AT A GLANCE

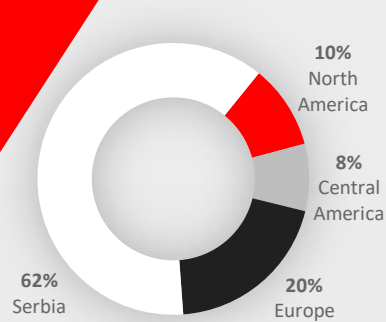
MARKET GROWTH / PRODUCTIVITY / INTELLECTUAL CAPITAL / VALUE CREATION



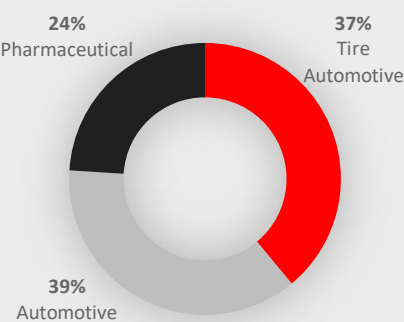
PUBLIC



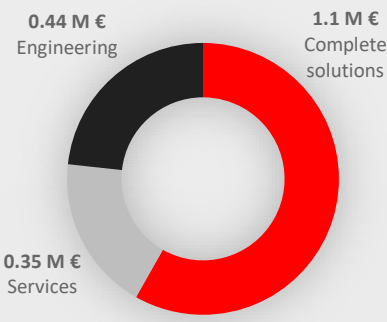
YEAR AT A GLANCE



BY REGION



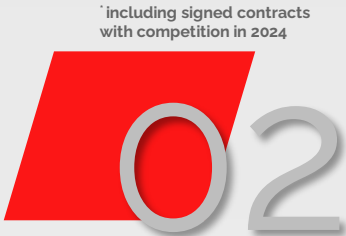
BY INDUSTRY



BY SEGMENT*

WE INTEGRATE CONTROL AND INFORMATION ACROSS THE ENTERPRISE TO HELP INDUSTRIAL COMPANIES AND THEIR PEOPLE BE MORE PRODUCTIVE AND SUSTAINABLE.

expanding automation possibility



* including signed contracts with competition in 2024

PROJECTS PRESENCE



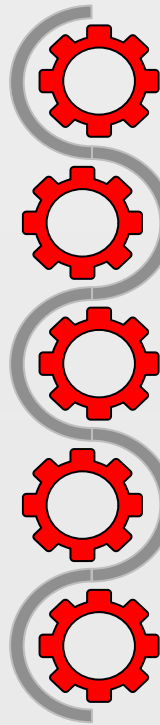
OUR AUTOMATION COMPANY IS POISED TO REVOLUTIONIZE THE INDUSTRY BY PROVIDING CUTTING-EDGE AUTOMATION SOLUTIONS TO BUSINESSES ACROSS VARIOUS SECTORS. WITH A TEAM OF EXPERIENCED ENGINEERS AND A COMMITMENT TO INNOVATION, WE AIM TO STREAMLINE OPERATIONS, INCREASE PRODUCTIVITY, AND REDUCE COSTS FOR OUR CLIENTS. OUR COMPREHENSIVE SUITE OF AUTOMATION SERVICES AND SOLUTIONS WILL ENABLE ORGANIZATIONS TO OPTIMIZE THEIR PROCESSES AND STAY COMPETITIVE IN A RAPIDLY EVOLVING MARKET.

expanding automation possibility



MISSION STATEMENT

KEY OBJECTIVES



DEVELOP INNOVATIVE AUTOMATION SOLUTIONS TAILORED TO CLIENTS' SPECIFIC NEEDS

BUILD STRONG PARTNERSHIPS WITH INDUSTRY-LEADING TECHNOLOGY PROVIDERS

DELIVER EXCEPTIONAL CUSTOMER SERVICE AND SUPPORT

EXPAND OUR CLIENT BASE ACROSS DIVERSE SECTORS

FOSTER A CULTURE OF CONTINUOUS LEARNING AND INNOVATION

"...Our mission is to empower businesses with state-of-the-art automation technologies, enabling them to enhance efficiency, achieve operational excellence, and drive sustainable growth..."

ENGINEERING TEAM

expanding automation possibility



PUBLIC



SOLUTIONS AND SERVICES

SOLUTION OFFERINGS

PROCESS AUTOMATION

Streamlining and automating repetitive tasks and workflows

ROBOTICS INTEGRATION

Deploying robots and autonomous systems to enhance productivity and safety

TEST APPLICATIONS

Introducing cutting-edge measuring and testing solutions

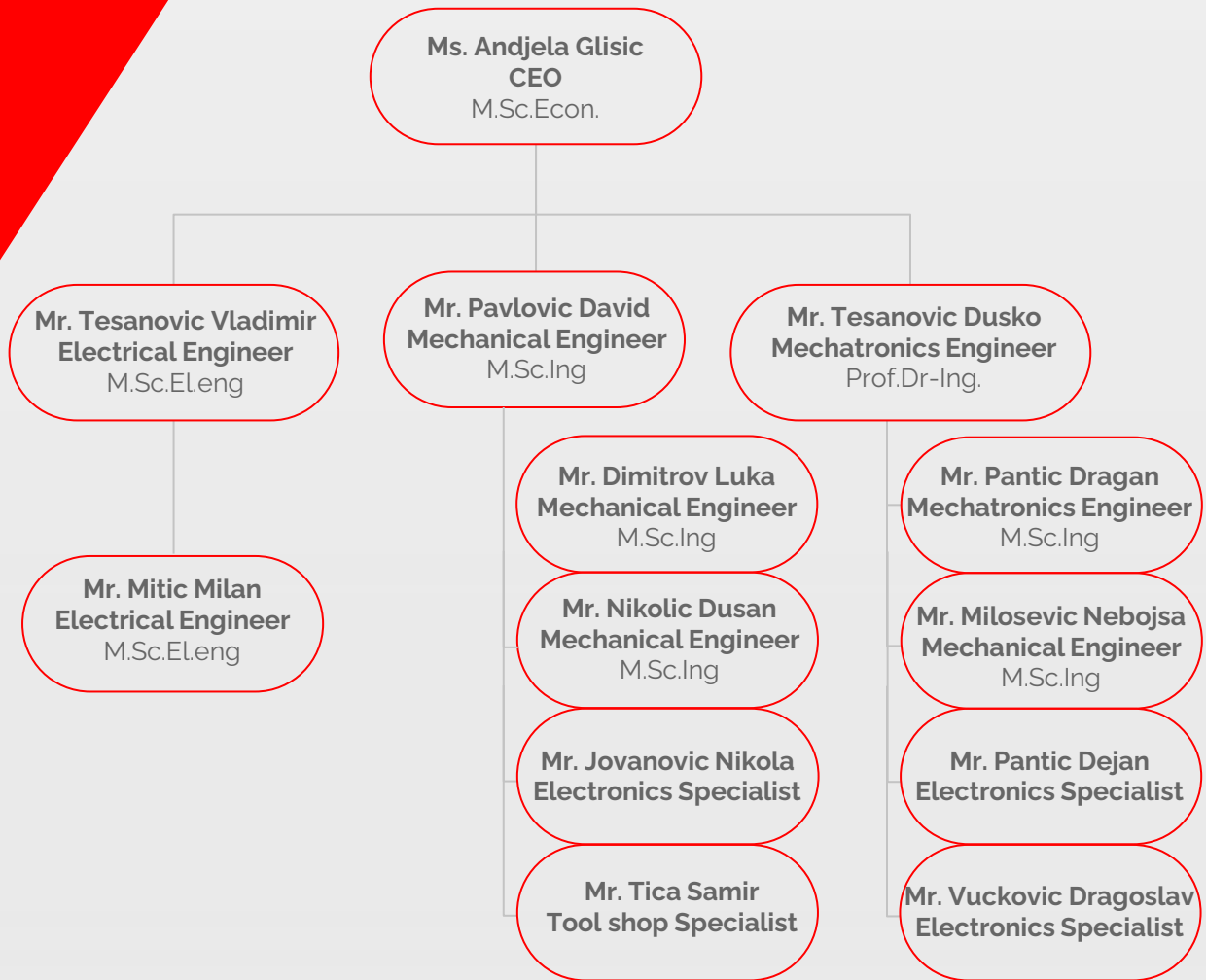
"...Our primary target market comprises medium-sized to large businesses in manufacturing, logistics, and healthcare sectors. However, we will also explore opportunities in other industries that can benefit from automation, such as agriculture, energy, and retail..."

CEO ANDJELA GLISIC

expanding automation possibility



OUR TEAM



"...Rapid Solutions Automation will be led by a team of experienced professionals with expertise in automation technologies, project management, and business development. The leadership team will be supported by skilled engineers, technicians, and customer support staff..."

CEO ANDJELA GLISIC

expanding automation possibility



PROJECT REFERENCE AUTOMOTIVE

PROJECT

LI ION PALETEIZER ROBOT CELL



100% CUSTOMER INVESTMENT



PROJECT COMPLETION 4 MONTHS



3 SUBCONTRACTORS



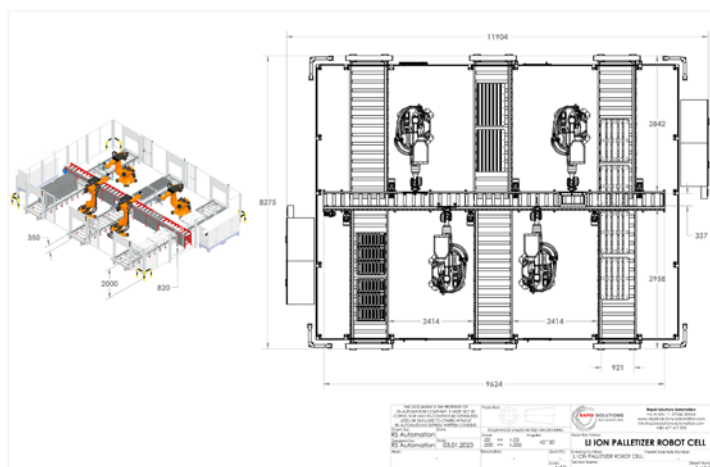
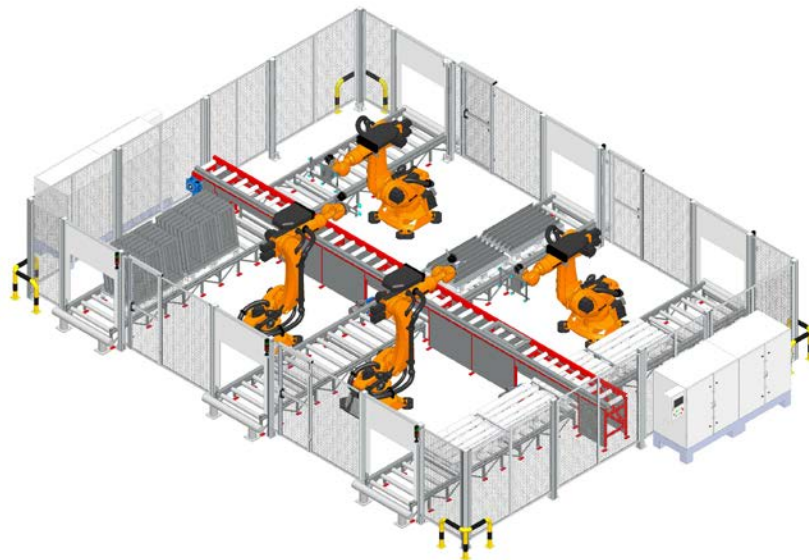
4 KUKA ROBOTS



UNIT PALETIZING CAPACITY:
46 LI ION BATTERY ALU FRAMES
PER MINUTE



COMPLETE AUTOMATION, MAIN
ELECTRICAL ENCLOSURES AND
UNIT DESIGN DONE BY
RAPID SOLUTIONS AUTOMATION



INSTALLATION
LOCATION: SERBIA



expanding automation possibility



PUBLIC

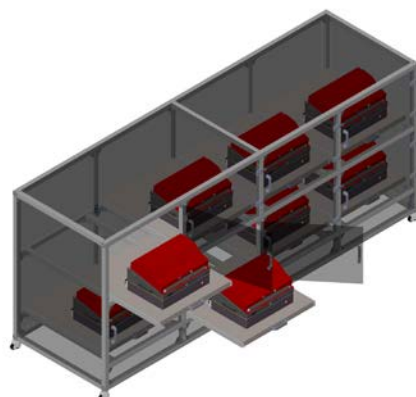


PROJECT REFERENCE

AUTOMOTIVE

PROJECT

FIXTURE AUTO SHELF



70% CUSTOMER INVESTMENT
30% STATE DEVELOPMENT
SUPPORT



PROJECT COMPLETION 7 WEEKS



1 SUBCONTRACTOR



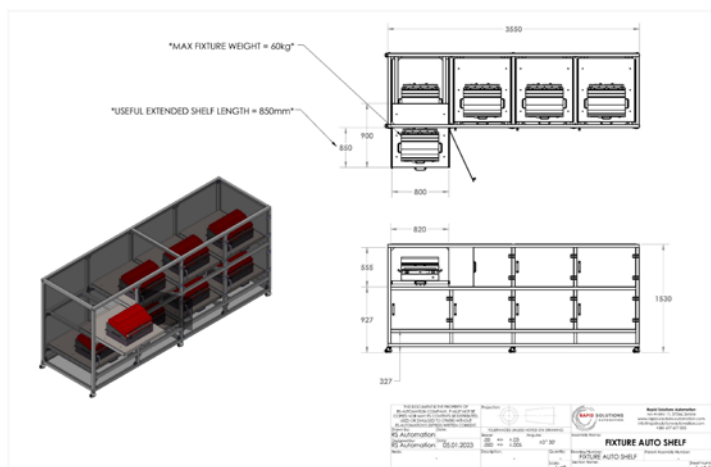
FULLY AUTOMATIC SELECTION OF
FIXTURES PER HMI AND UNLOCK
FEATURE, OPTIONAL MANUAL



EXPENDABLE CAPACITY OF 8 TO 32
FIXTURE SLOTS



COMPLETE AUTOMATION, MAIN
ELECTRICAL ENCLOSURES AND
UNIT DESIGN DONE BY
RAPID SOLUTIONS AUTOMATION



INSTALLATION
LOCATION: SERBIA &
GERMANY



expanding automation possibility

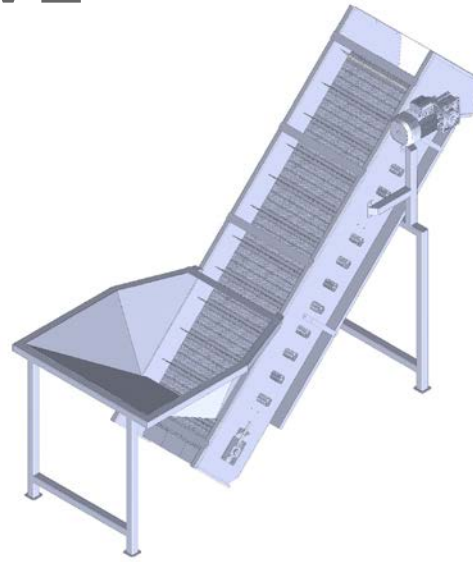


PUBLIC



PROJECT REFERENCE

TIRE AUTOMOTIVE



PROJECT

RUBBER BLEND LIFTER



100% CUSTOMER INVESTMENT



PROJECT COMPLETION 6 MONTHS



1 SUBCONTRACTOR



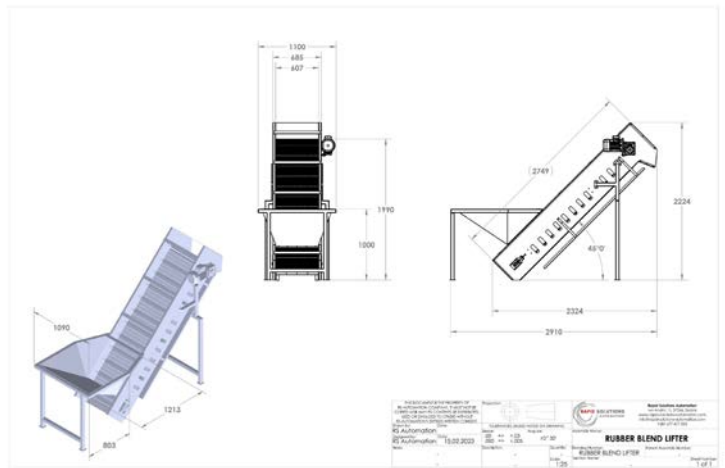
MAX LOAD CARRIAGE OF 1.85t
35KW 3 PH MOTOR



LIFTING SPEED OF 1.5m/s AND



COMPLETE AUTOMATION, MAIN
ELECTRICAL ENCLOSURES AND
UNIT DESIGN DONE BY
RAPID SOLUTIONS AUTOMATION



INSTALLATION
LOCATION: SERBIA



expanding automation possibility



PUBLIC



PROJECT REFERENCE GLOBAL

WIRING

FIXTURE WIRING SOLUTIONS



**BEST MARKET PRICING
GUARANTEED!**



**PROJECT COMPLETION 3-14 DAYS
PER FIXTURE - DEPENDING ON
SULTION COMPLEXITY**



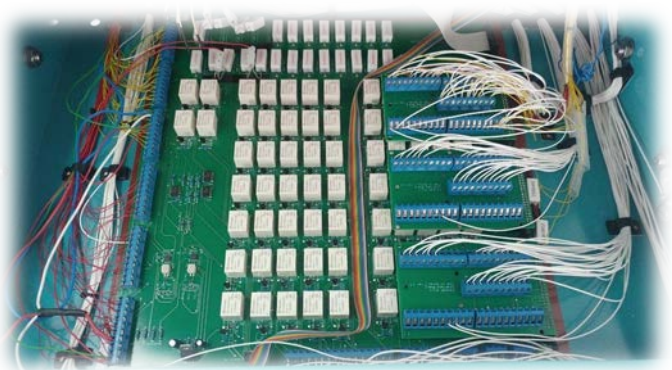
**TEAMS OF ONE ELECTRICAL
ENGINEER AND ONE ELECTIRCIAN
SECURES BEST PERFORMANCE
AND QUALITY**



**ICT AND FCT WIRING SOLTIONS FOR
OFFLINE AND INLINE TESTING
EQUIPMENT**



**COMPLETE WIRING AND
UNIT ELECTRICAL DESIGN DONE BY
RAPID SOLUTIONS AUTOMATION**



expanding automation possibility



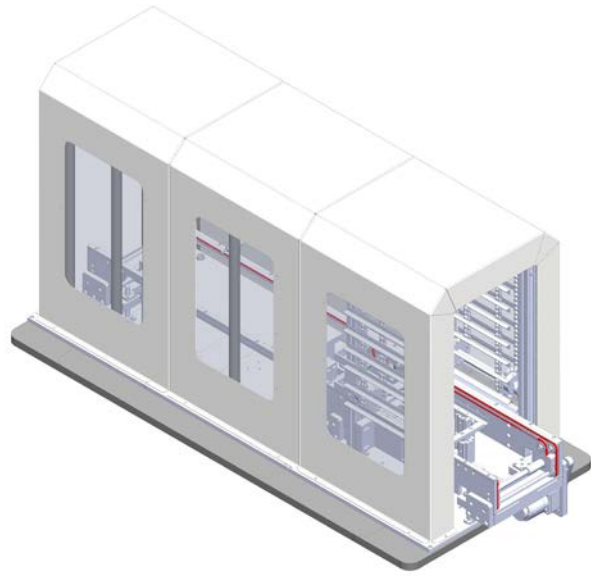
PUBLIC



PROJECT REFERENCE AUTOMOTIVE

PROJECT

INLINE ICT COMPACT 23



100% CUSTOMER INVESTMENT



PROJECT COMPLETION 8 MONTHS



2 SUBCONTRACTORS



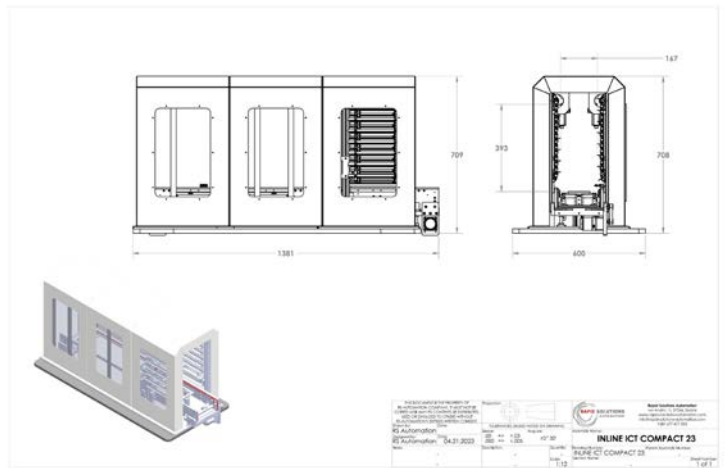
STACKER CAPACITY OF 9 PCBs
PRODUCTION FLOOR COMPACT
CLEAN ROOM READY / ESD READY



COMPLETE TESTING IN 41 s



COMPLETE AUTOMATION, MAIN
ELECTRICAL ENCLOSURES AND
UNIT DESIGN DONE BY
RAPID SOLUTIONS AUTOMATION

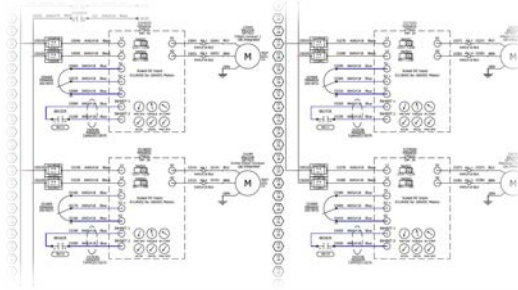


INSTALLATION
LOCATION: GERMANY



expanding automation possibility

PROJECT REFERENCE GLOBAL



WIRING

ENCLOSURE DESIGN AND WIRING SOLUTIONS



**BEST MARKET PRICING
GUARANTEED!**



**PROJECT COMPLETION 2-8 WEEKS
PER ENCLOSURE - DEPENDING ON
SULTION COMPLEXITY**



**TEAMS OF 8 SENIOR ENGINEERS
READY FOR ANY CHALLENGE.
WIDE NETWORK OF SUPPLIERS**



**SIEMENS, ALLEN BRADLEY OR 3rd
PARTY SUPPLIER - WE ARE EXPERTS
FOR YOUR ENCLOSURE BUILD**



**COMPLETE WIRING AND
UNIT ELECTRICAL DESIGN DONE BY
RAPID SOLUTIONS AUTOMATION**



expanding automation possibility

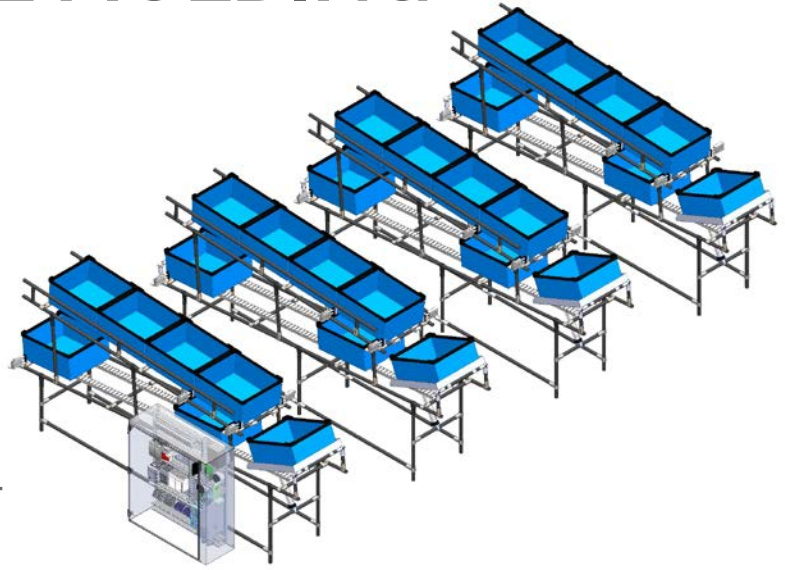


PROJECT REFERENCE

AUTOMOTIVE MOLDING

PROJECT

AGV BUFFER LINE



100% CUSTOMER INVESTMENT



PROJECT COMPLETION 3 MONTHS



1 SUBCONTRACTOR



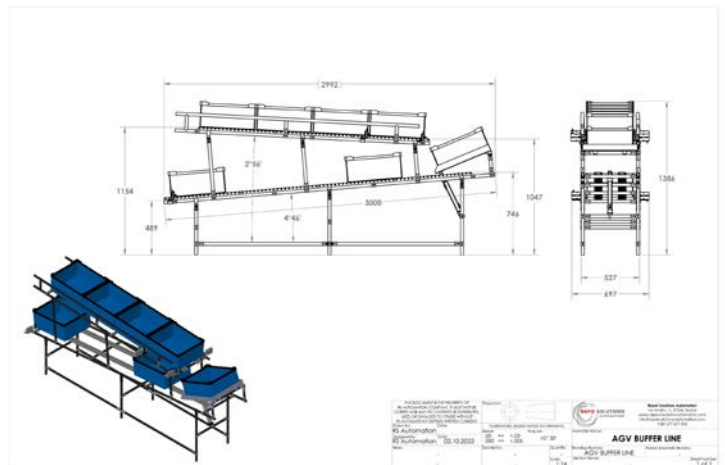
BUFFER CAPACITY OF 9 LARGE KLTs
AUTOMATIC LEVELING, BUFFERING
AND DISCHARGING 100%
PNEUMATIC SOLUTION
CLEAN ROOM READY / ESD READY



DECREASED INTERNAL
MANIPULATION TIME BY 120%



COMPLETE AUTOMATION, MAIN
ELECTRICAL ENCLOSURES AND
UNIT DESIGN DONE BY
RAPID SOLUTIONS AUTOMATION



INSTALLATION
LOCATION: SPAIN



expanding automation possibility



PUBLIC

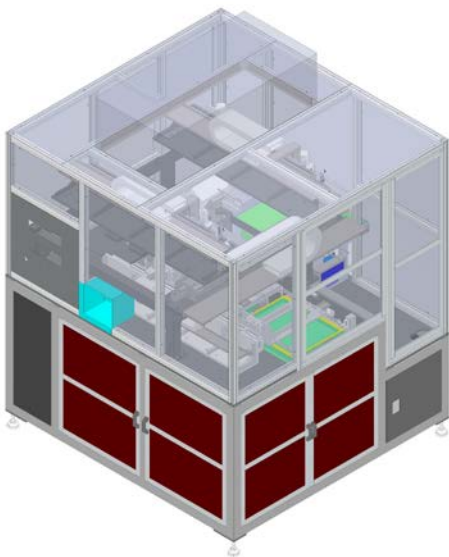


PROJECT REFERENCE

AUTOMOTIVE

PROJECT

TRAY STACKER P&P



100% CUSTOMER INVESTMENT



PROJECT COMPLETION 6 MONTHS



3 SUBCONTRACTORS



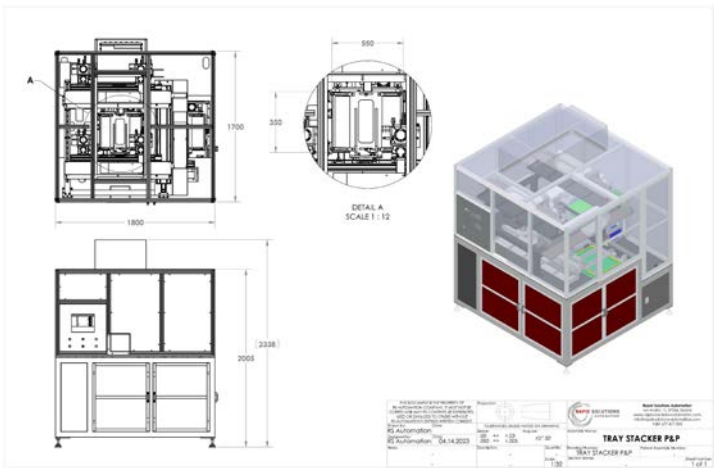
STACKER CAPACITY OF 30+ TRAYS
WITH 15mm STACK HEIGHT
PRODUCTION FLOOR COMPACT
CLEAN ROOM READY / ESD READY



AXIS PICKING SPEED OF MAX 5m/s
AVERAGE STACKING SPEED OF 50
TRAYS/MIN – DEPENDING ON
PRODUCT COUNT



COMPLETE AUTOMATION, MAIN
ELECTRICAL ENCLOSURES AND
UNIT DESIGN DONE BY
RAPID SOLUTIONS AUTOMATION



INSTALLATION
LOCATION: GERMANY

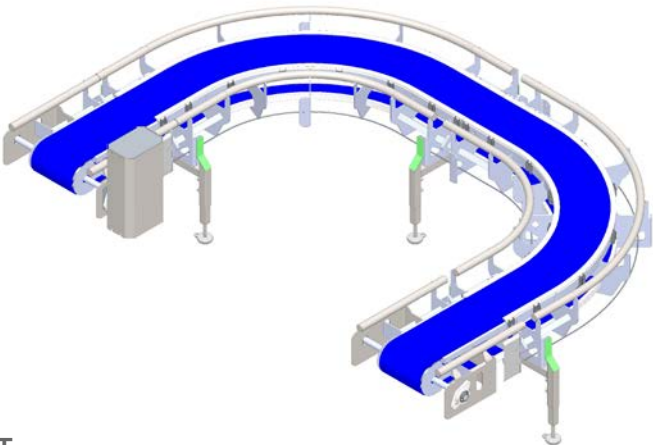


expanding automation possibility



PUBLIC

PROJECT REFERENCE PHARMACEUTICAL



PROJECT

MODULAR CONVEYOR PH23



100% CUSTOMER INVESTMENT



PROJECT COMPLETION 2 MONTHS



1 SUBCONTRACTOR



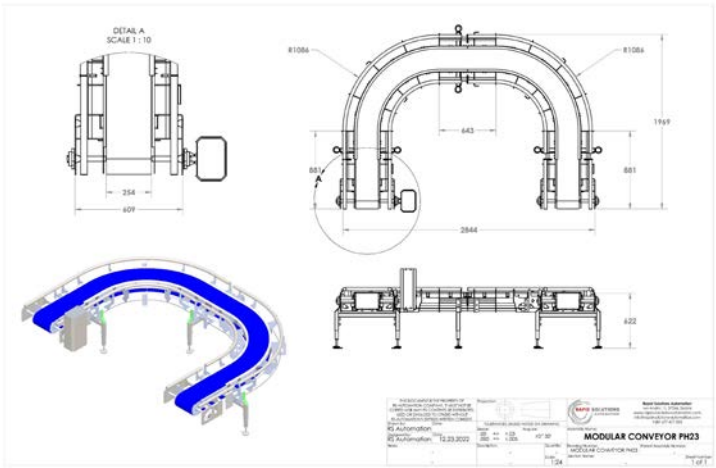
MAX LOAD CARRIAGE OF 7kg/m²
SERVO DRIVEN



CONVEYING SPEED OF 300 ft/s



COMPLETE AUTOMATION AND
UNIT DESIGN DONE BY
RAPID SOLUTIONS AUTOMATION



INSTALLATION
LOCATION: COSTA RICA



expanding automation possibility



PUBLIC

PROJECT REFERENCE AUTOMOTIVE

PROJECT

LL PUSHER CONVEYOR LINE



100% CUSTOMER INVESTMENT



PROJECT COMPLETION 4 MONTHS



1 SUBCONTRACTOR



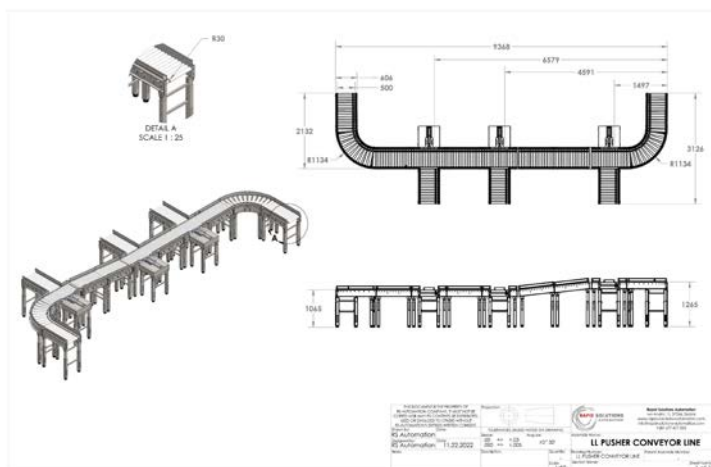
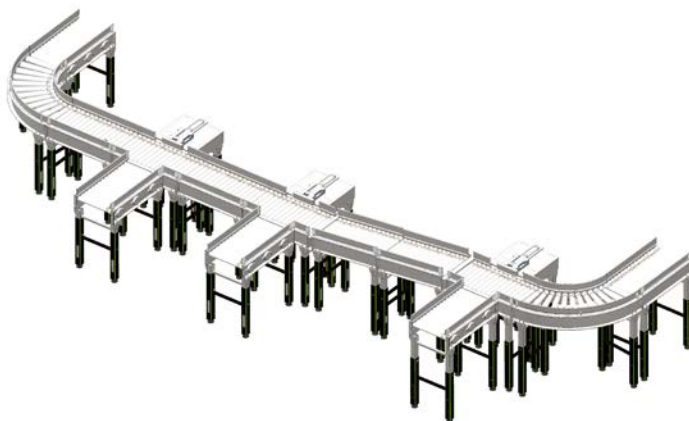
MAX LOAD CARRIAGE OF 350kg/m²



CONVEYING SPEED OF 0.85m/s



COMPLETE AUTOMATION, MAIN
ELECTRICAL ENCLOSURES AND
UNIT DESIGN DONE BY
RAPID SOLUTIONS AUTOMATION



INSTALLATION
LOCATION: SERBIA



expanding automation possibility



PUBLIC



PROJECT REFERENCE AUTOMOTIVE

PROJECT

KLT TRANSFER CONVEYOR



100% CUSTOMER INVESTMENT



PROJECT COMPLETION 1 MONTH



1 SUBCONTRACTOR



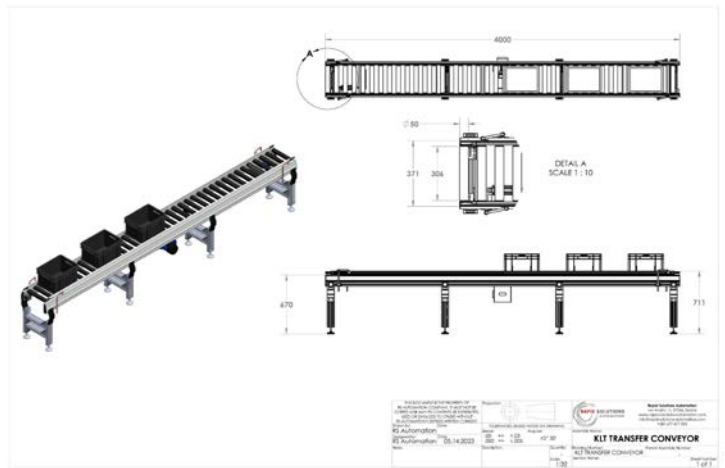
OPTIMIZED DESIGN FOR STANDARD
VDA RL KLTs
VFD DRIVEN



CONVEYING SPEED OF 0.6m/s



COMPLETE AUTOMATION, MAIN
ELECTRICAL ENCLOSURES AND
UNIT DESIGN DONE BY
RAPID SOLUTIONS AUTOMATION



INSTALLATION
LOCATION: GERMANY



expanding automation possibility



PUBLIC

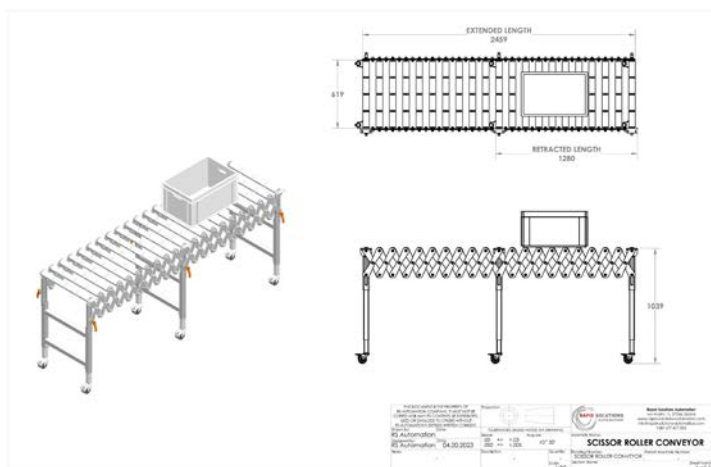


PROJECT

A 3D perspective illustration of a white, expandable metal rolling cart. The cart features a series of interconnected, accordion-like sections that allow it to be extended or retracted. It has four vertical legs, each equipped with a castor wheel for mobility. Orange-colored adjustment knobs are visible on the side rails. A rectangular storage bin is mounted on top of the extended section. The entire unit is shown in a clean, white finish against a plain background.



COMPLETE UNIT DESIGN DONE BY
RAPID SOLUTIONS AUTOMATION



**INSTALLATION LOCATION:
MULTIPLE IN SERBIA AND
GERMANY**



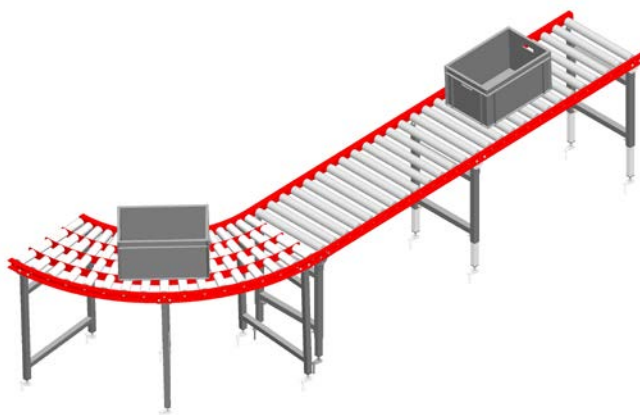
expanding automation possibility



PUBLIC

PROJECT REFERENCE

AUTOMOTIVE INTERIOR



PROJECT

MODULAR ROLLER CONVEYOR ST



LOW-COST CONVEYING SOLUTION



PROJECT COMPLETION 4 WEEKS



1 SUBCONTRACTOR



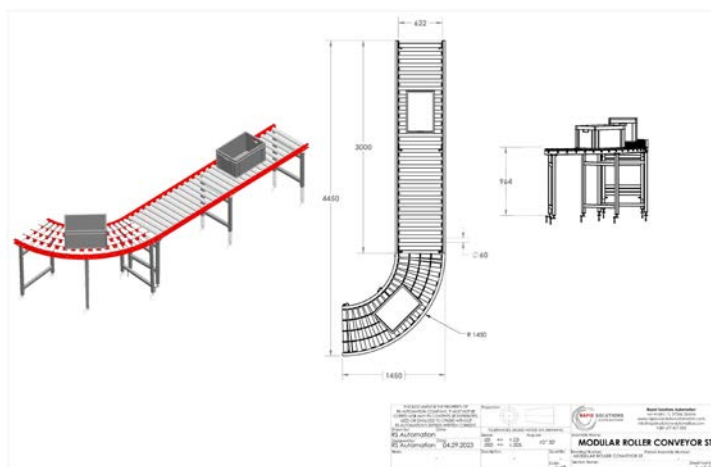
MAX LOAD CARRIAGE OF 120kg/m²



CONVEYING SPEED OF MAX 0.75m/s



COMPLETE UNIT DESIGN DONE BY
RAPID SOLUTIONS AUTOMATION



INSTALLATION
LOCATION: SERBIA



expanding automation possibility



PUBLIC



AT YOUR DISPOSAL



RAPID SOLUTIONS
AUTOMATION

expanding automation possibility

info@rapid-solutions-automation.com

www.rapid-solutions-automation.com

+381 677 677 003

YOU HAVE A NEED FOR **AUTOMATION**?
WE HAVE THE **RAPID** SOLUTION FOR YOU!

MARKET GROWTH / PRODUCTIVITY / INTELLECTUAL CAPITAL / VALUE CREATION

